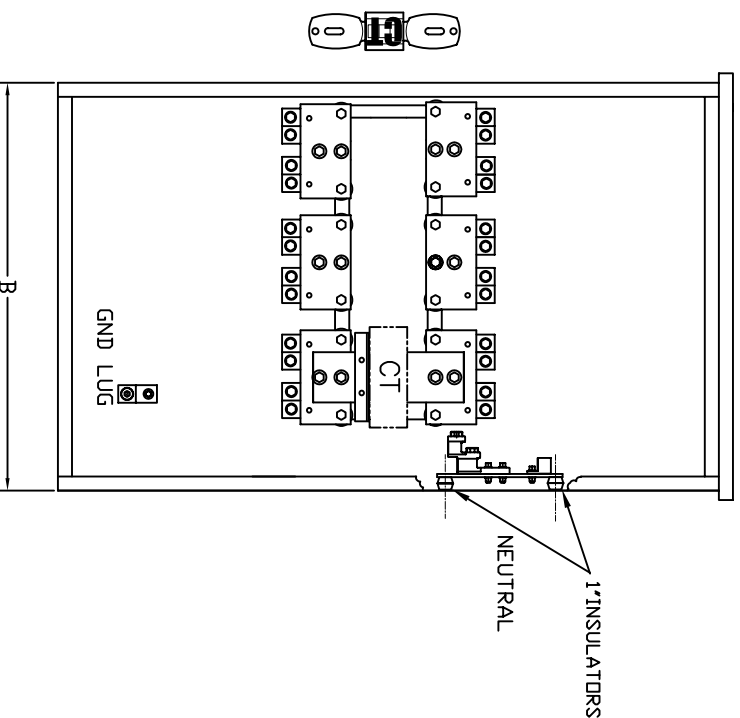
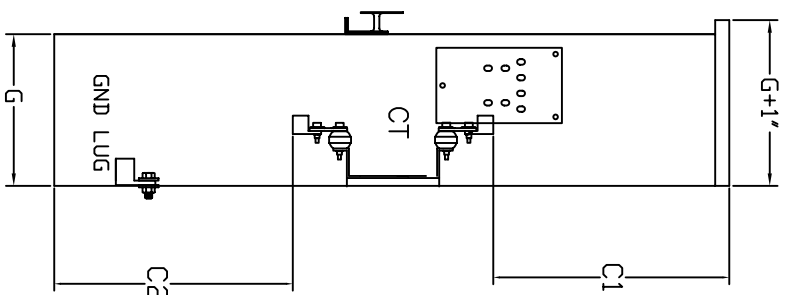


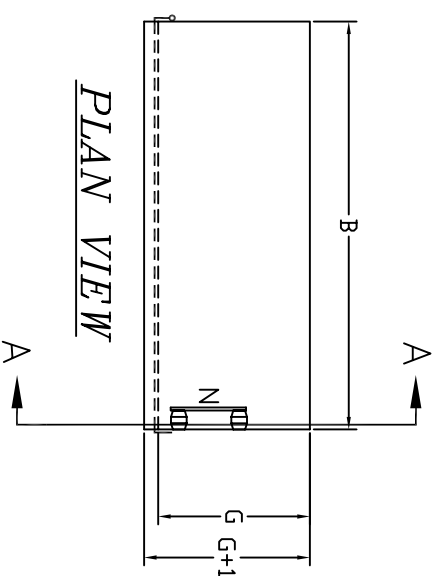
FRONT VIEW



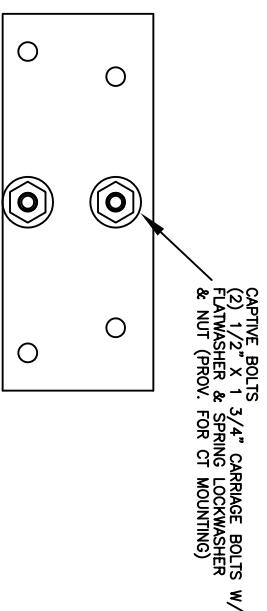
INTERIOR VIEW



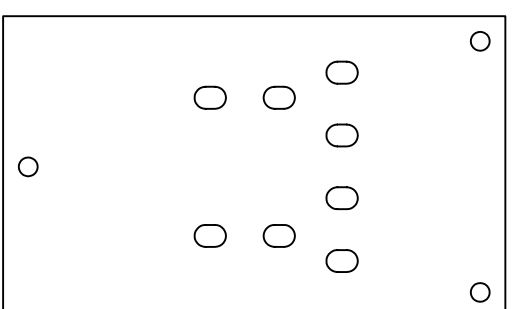
SIDE VIEW SECTION A-A



PLAN VIEW



CTMB12 (ALL)



CTN12

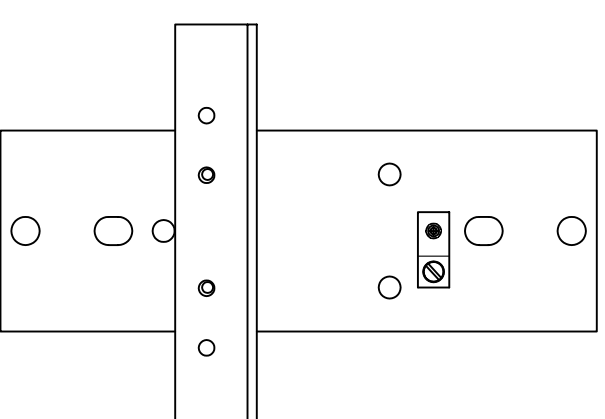
MN LINE & NEUTRAL BUS PAD DETAIL

AMPACITY	MINIMUM DIMENSION								COMPONENTS				LUGS PER ϕ & N
	A	B	C1	C2	D	E	F	G	H	CABINET CL48	3 ϕ PART #	1 ϕ PART #	
1200-AL BUS	48"	33"	16.50"	16.50"				12"			MNPCT12-4L	MNPCT12-3L	4 #6-750MCM

NOTE: FOR SINGLE PHASE UNITS, OMIT B ϕ BUS ASSEMBLY

GENERAL NOTES

- 1- CURRENT TRANSFORMER CABINET COMPLES WITH 'NATIONAL ELECTRICAL CODE'. DOOR HAS (3) HINGES WITH A 3 POINT DOOR LATCH AND PADLOCKABLE HANDLE WITH 7/16" LOCKING HASP HOLE.
 - 2- 14 GA. GALV. STEEL MOUNTING PAN WITH 1 3/8" INSULATOR SUPPORTS FOR BUS WORK.
 - 3- TWO 1/2" TRANSFORMER MOUNTING BOLTS, 1 3/4" CENTER TO CENTER FOR MOUNTING POWER CO. CT'S
 - 4- 3/8" LUG MOUNTING BOLTS.
 - 5- COPPER-ALUMINUM (1) 750MCM-#6 OR (2) 300MCM-#6 CABLE CONNECTION LUG. PROVISION FOR WPS LUGS AT 1200A.
 - 6- NEUTRAL OR GROUNDED CONDUCTOR PROVIDED WITH (1) 10-32NC BOLT & A35 LUG FOR NEUTRAL TAP.
 - 7- BAR OR DONUT TYPE CT FURNISHED BY UTILITY CENTER POSITION IS NOT REQUIRED IF SERVICE IS 1 ϕ ,3W.
- * FAULT CURRENT RATINGS FOR ALL AMPERAGES 85,000 AMPS AT 250VAC WITH NO CABLE BRACING REQUIRED.**
- * ALL CABINETS ARE ETL LABELED FOR TYPE-3R APPLICATION PER U.L. 50 AND U.L. 414 STANDARDS. THEY MEET ALL NATIONAL ELECTRICAL CODES & NEMA STANDARDS.**
- STANDARD ACCESSORIES:**
- WIND CATCH ON EXTERIOR DOOR
 - MOUNTING HARDWARE FOR UTILITY CURRENT TRANSFORMERS.
 - NEUTRAL PROVIDED WITH (1) #10-32NC BOLT & A35 LUG FOR NEUTRAL TAP
 - LUGS PROVIDED AS REQUIRED FOR UTILITY AND CONTRACTOR



CTL-12

CT LINK W/BKT

REV. BY	DATE	JOB NAME	CUSTOMER
ECP	07/06/12	MN. POWER METERING TRANSFORMER CABINET CATALDQ DRAWING	MINNESOTA POWER

REV. BY	DATE	JOB NAME	CUSTOMER	DRAWING NUMBER
ECP	07/06/12	MN. POWER METERING TRANSFORMER CABINET CATALDQ DRAWING	MINNESOTA POWER	MNP CT12-4L
APPROVED	DATE	SCALE	CUSTOMER NUMBER	
	02/09/12	AS SHOWN		



AMERICAN MIDWEST POWER
 3131 NICKSBURG LANE, MINNEAPOLIS, MINNESOTA
 PHONE (763) 551-1555 FAX (763) 551-9275

P.O. BOX 47036
 MINNEAPOLIS, MN 55447
 SHEET 1 OF 1