

**GENERAL NOTES**

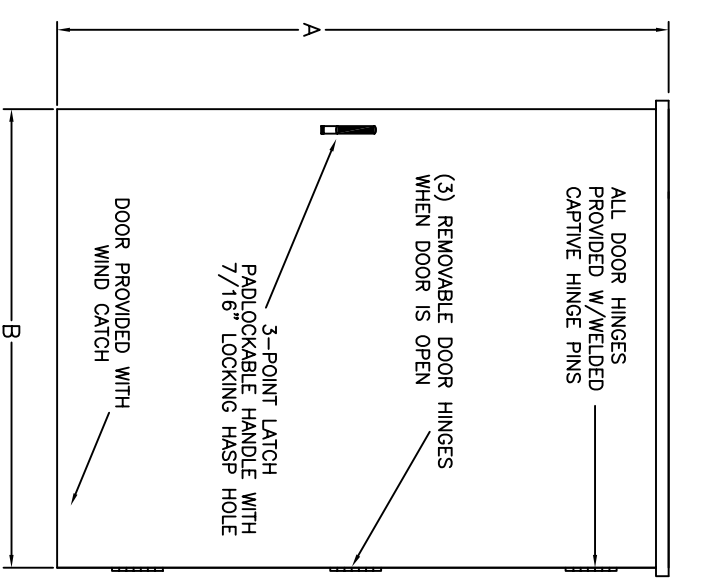
- 1- CURRENT TRANSFORMER CABINET COMPLETES WITH 'NATIONAL ELECTRICAL CODE'. DOOR HAS (3) HINGES WITH A 3 POINT DOOR LATCH AND PADLOCKABLE HANDLE WITH 7/16" LOCKING HASP HOLE. MADE FROM 14GA. GALVANIZED STEEL
- 2- 14 GA. GALV. STEEL MOUNTING PAN WITH 1 3/8" INSULATOR SUPPORTS FOR BUS WORK.
- 3- TWO 1/2" TRANSFORMER MOUNTING BOLTS, 1 3/4" CENTER TO CENTER FOR MOUNTING POWER CO. CT'S
- 4- 3/8" LUG MOUNTING BOLTS.
- 5- COPPER-ALUMINUM (1) 750MCM-#6 OR (2) 300MCM-#6 CABLE CONNECTION LUG.
- 6- NEUTRAL 2#14-1/0 LUGS FOR N, TAP & 1#6-250MCM LUG FOR GROUNDING
- 7- CENTER POSITION - IS NOT REQUIRED IF SERVICE IS 1Ø,3W.
- 8- LOAD PARTITION 22" X 10" X 1/2" PAN, FORMED GAL. STEEL
- 9- CABINET IS TOTALLY TAMPER PROOF

NOTE: FAULT CURRENT RATINGS FOR ALL AMPERAGES 85,000 AMPS AT 480VAC WITH NO CABLE BRACING REQUIRED.

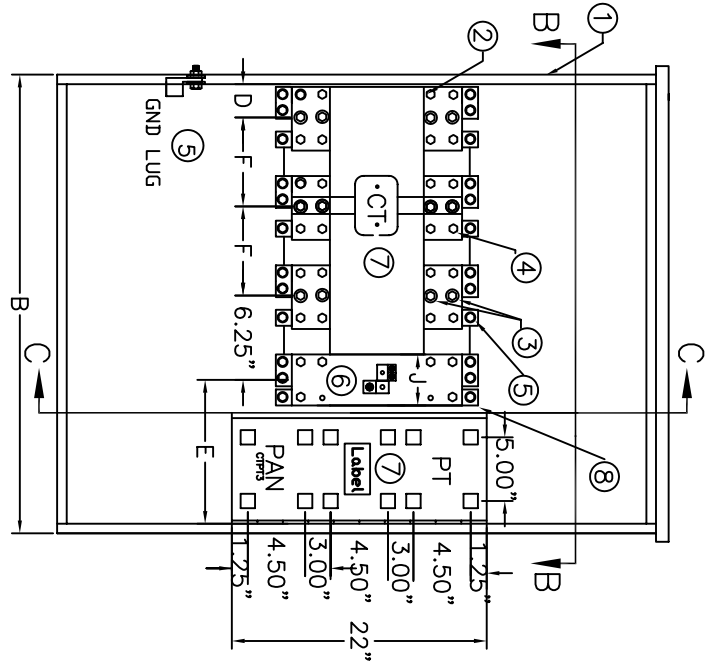
**STANDARD ACCESSORIES:**

- WIND CATCH ON EXTERIOR DOOR
- MOUNTING HARDWARE FOR UTILITY CURRENT TRANSFORMERS.
- MOUNTING HARDWARE FOR (3) UTILITY PT'S.

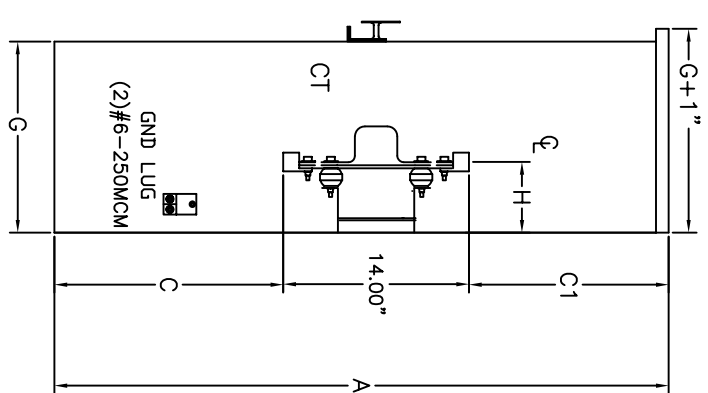
\* ALL CABINETS ARE ETL LABELED FOR NEMA-3R APPLICATION PER U.L. 50 AND U.L. 414. THEY MEET ALL NATIONAL ELECTRICAL CODES & NEMA STANDARDS.



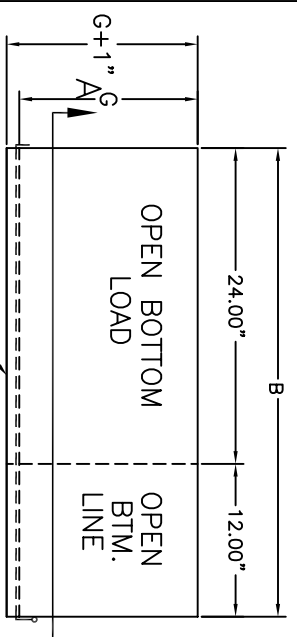
**FRONT VIEW**



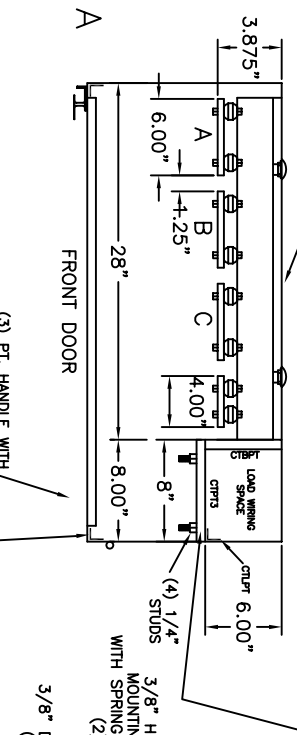
**SECTION VIEW A-A**



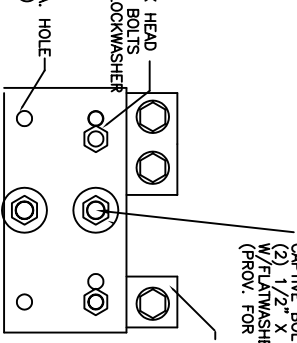
**SECTION VIEW C-C**



**PLAN VIEW**



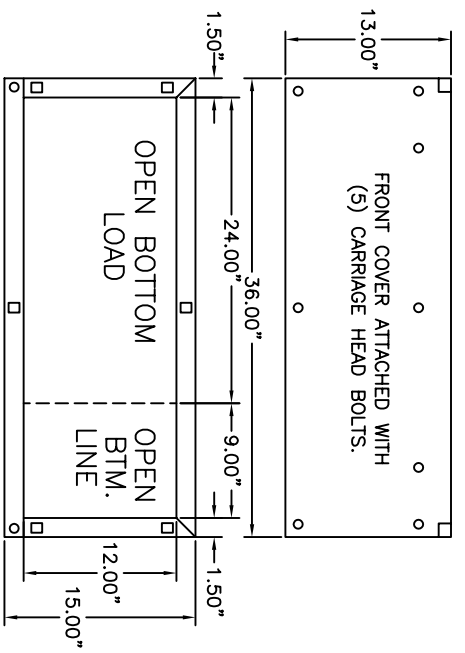
**SECTION VIEW B-B**



**BUS DETAIL**

THIS MOUNTING PAN IS FOR PT'S WHEN REQUIRED. NO WIRING IN FRONT OF THIS PAN, SPACE BEHIND MAY BE USED FOR LINE CABLES ONLY.  
IF THIS CABINET IS USED FOR PAD MOUNTING YOU MUST USE PART # CR12E EXTENSION

**LABEL**



**PART NUMBER CR12E  
PAD MOUNT EXTENSION KIT**

**ALL WALL MOUNTED CABINETS SUITABLE FOR ALL WIRING CONDITIONS  
THESE CABINETS MAY BE USED FOR PAD MOUNT  
WHEN EXTENSION PART # CR12E IS USED SHOWN AT RIGHT**

AMPACITY	3Ø-4W 250V. & 480V WITH PT PROVISIONS	LUGS/POLE ON LINE & LOAD	MINIMUM DIMENSION FOR 3Ø 4W CABINETS	W/CR12E PAD MTD. EXT
400	MNPCT4-4L CR48S	1 #6- OR 300MCM	A B C C1 D E F G H J	A A C
600	MNPCT6-4L CR48S	2 4	48" 36" 20" 14" 4.25" 11" 7.25" 15" 3.88" 4"	60" 32"
800	MNPCT8-4L CR48S	3 6	48" 36" 20" 14" 4.25" 11" 7.25" 15" 3.88" 4"	60" 32"

AMPACITY	1Ø-3W 250V WITH NO PT PROVISIONS	LUGS/POLE ON LINE & LOAD	MINIMUM DIMENSION FOR 1Ø 3W CABINETS	W/CR12E PAD MTD. EXT
400	MNPCT4-3L CR48S	1 #6- OR 300MCM	A B C C1 D E F G H J	A A C
600	MNPCT6-3L CR48S	2 4	48" 36" 20" 14" 4.25" 11" 7.25" 15" 3.88" 4"	60" 32"
800	MNPCT8-3L CR48S	3 6	48" 36" 20" 14" 4.25" 11" 7.25" 15" 3.88" 4"	60" 32"

REV. BY DATE	JOB NAME	TITLE	CUSTOMER
ECP 02/09/12	MN POWER	400-800A. WALL MOUNT	MIN POWER
ECP 07/06/12	METERING TRANSFORMER CABINET	480V OR LESS CURRENT TRANSFORMER CABINET	MIN POWER
DRAWN CP	DATE 06/22/10	DO NOT SCALE DRAWING	CUSTOMER NUMBER
APPROVED	DATE	SCALE NTS	DRAWING NUMBER
		<b>AMERICAN Midwest Power</b> 3131 WICKSBURG LANE MINNEAPOLIS, MINNESOTA PHONE (763) 551-1535 FAX (763) 551-9275	
PO BOX 55447 MINNEAPOLIS, MN 55447		DRAWING NUMBER MNP CT8-4L	
SHEET 1		OF 1	