

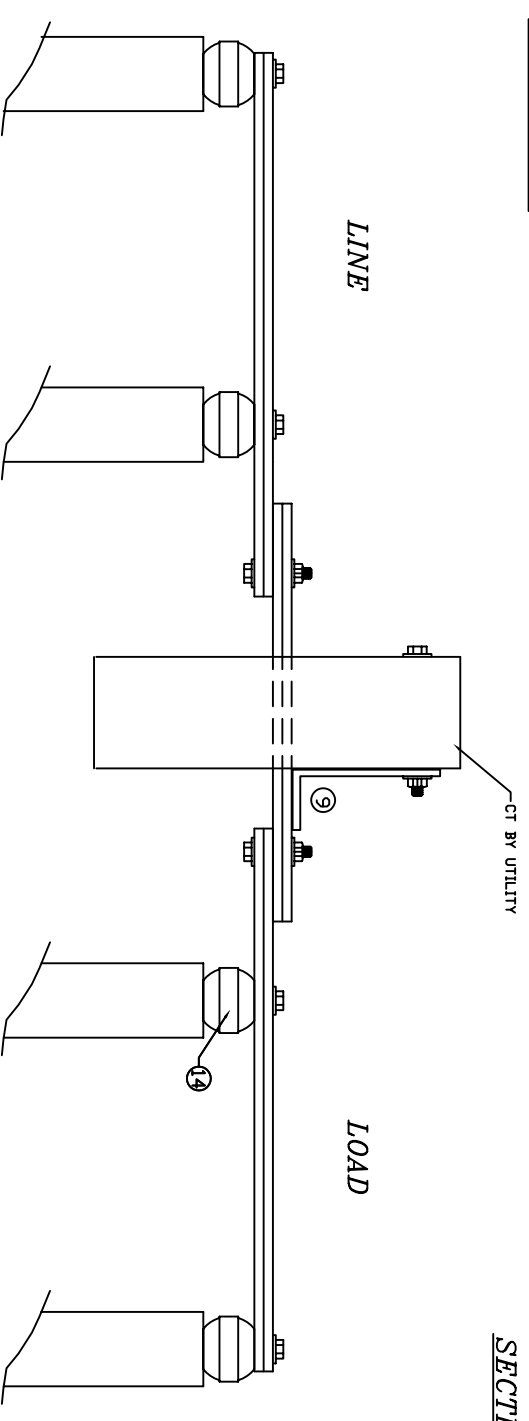
FRONT VIEW

SIDE VIEW

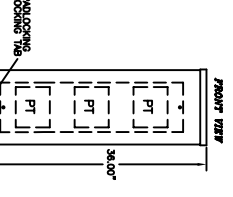
BACK VIEW

SECTION VIEW A-A

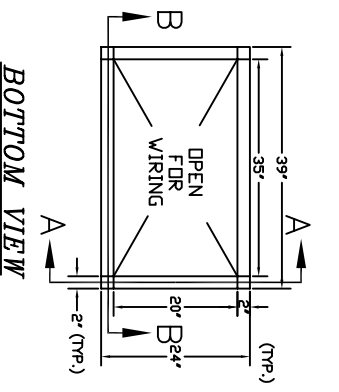
SECTION VIEW B-B



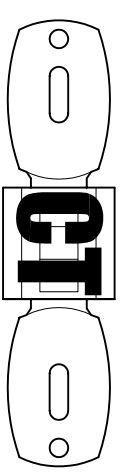
BUS BAR DETAILS



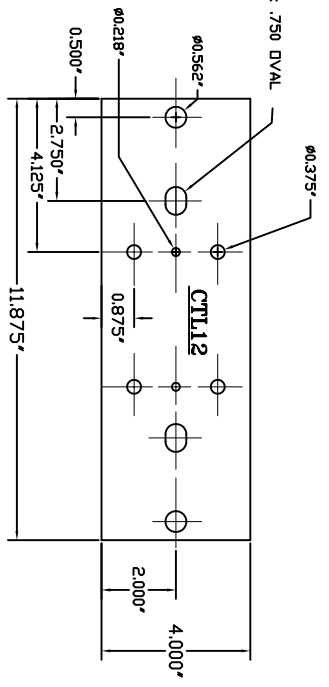
NOTE: EXTERNAL CT ENCLOSURE REQUIRED FOR 480V SERVICES PART # AMEPTB36GRN



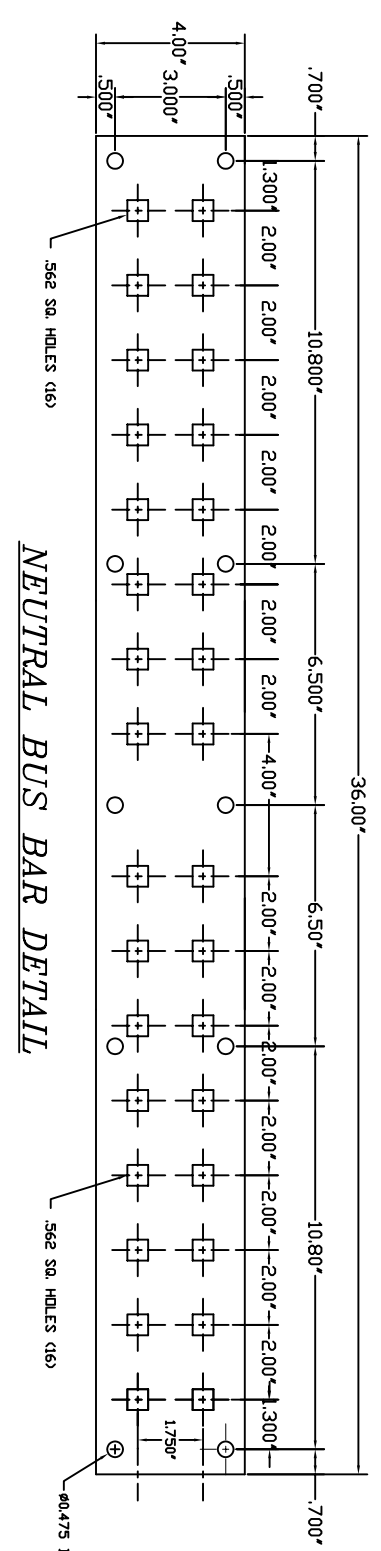
BOTTOM VIEW



WILL ACCEPT BAR TYPE CTS



LINK FOR USE WITH WINDOW TYPE CTS



NEUTRAL BUS BAR DETAIL

ITEM QTY	CATALOG NUMBER	DESCRIPTION	SUPPLIER
1	FUF60	60" UPRIGHT FRAME MEMBER	AMP
2	FMJ37	FRONT FRAME MEMBER	AMP
3	FSM22	SIDE FRAME MEMBER	AMP
4	FFP36445	BACK FILLER PLATE	AMP
5	FFP3603F	FILLER PLATE	AMP
6	FSF2145	SIDE FILLER PLATE	AMP
7	FFP3639HZ	HINGED DOOR	AMP
8	FT3924	ROOF WITH CROSS HATCH	AMP
9	GMB	CT MOUNTING BRACKET	NOHL
10	FSBSC	BUS SUPPORT CHANNEL	AMP
11	FBMA	AØ BUS BAR STAND-OFF	AMP
12	FBMB	BØ BUS BAR STAND-OFF	AMP
13	FBMC	CØ BUS BAR STAND-OFF	AMP
14	R-1000GR1	STAND-OFF INSULATOR	RICH PLASTIC
15	72N/2900-50	PADLOCKABLE HANDLE WITH 3-POINT LATCH	AUSTIN
16			
17			
18			
19			
20			

ALUMINUM BUS	4" AL	COPPER BUS	4" CU	REQ. CTL LINKS 400AMPS
AMP QUANTITY	2	2	500	1000
AMP RATING	1000	1000	1000	1000

SPECIFICATIONS

- CABINET is free standing NEMA 3R. Frame is 12 gauge steel galvanized steel bolted together and supporting panels all sides. Panels are pan formed galvanized steel or prepainted steel. All sides protected with transformer green enamel. Enclosure is primed and painted transformer green enamel.
- SUPPORTING STRUCTURE for bus bars is bolted to framework such as that any phase bar can be relocated vertically as required to meet job requirements.
- BUS BARS are electrical grade pickled aluminum # 6101T65 per ASTM specifications # B317 with a minimum thickness of 1/2 inch. Maximum length is 72 inches. Maximum square inch maximum for Copper bus. Each bus bar is punched with 16 sets of 9/16" square holes on 2" horizontally and 1 3/4" centers vertically.
- RATINGS are 800A, 1000A, & 1200A, at 600V maximum 3ø-4W, 3ø-3W, 1ø-3W. All cabinets with single bus bar configurations (800A, 1000A CU.) shall be broed for 50,000A RMS ampers short circuit current rating. All multiple bus bars configuration shall be broed for 85,000A RMS ampers short circuit current rating.
- CONNECTORS in a range of #2 to 750 MCM are available in set screw type or compression type for field or factory installation. Connectors will be factory installed on right side of bus unless otherwise specified. Up to (12) - 750MCM or (24) - 250MCM conductors can be installed on each side, per bar.
- PT ENCLOSURE required for 480/277 volt installations, use part #PTB36 VT

- MEETS STANDARDS**
- ETL listed and labeled conforms to UL standard 1773 termination boxes
 - Conforms to NEMA standards
 - Meets National Electrical Code requirements
 - Meets Power Company requirements

THIS DRAWING AND THE INFORMATION THEREON ARE THE PROPERTY OF AMERICAN MIDWEST POWER, AND ARE NOT TO BE COPIED, REPRODUCED OR DISCLOSED TO OTHERS WITHOUT THE EXPRESS WRITTEN CONSENT OF AMERICAN MIDWEST POWER.

REV. BY DATE	JOB NAME:	TITLE:
ECP 04/27/12	MN POWER	SERVICE CONNECTION
ECP 07/08/12	UTILITY APPROVAL DRAWING	CABINET SCC
	SERVICE CONNECTION CABINET	W/CT PROVISION 1000A
DRAWN BY: ECP	DATE: 03/13/12	DO NOT SCALE
APPROVED BY: [Signature]	DATE: [Signature]	NTS
DRAWING NUMBER: MNP SCC10-4CT		CUSTOMER: MN POWER
DRAWING NUMBER: MNP SCC10-4CT		CUSTOMER NUMBER:
SHEET: 1 OF 1		

AMERICAN Midwest Power
3131 WORKSUNG LANE MINNESOTA
PHONE (763) 551-1555 FAX (763) 551-9275