

ITEM QTY	CATALOG NUMBER	DESCRIPTION	SUPPLIER	
1	4	FUR60	60" UPRIGHT FRAME MEMBER	AMP
2	5	FFF49	FRONT FRAME MEMBER	AMP
3	4	FSF22	SIDE FRAME MEMBER	AMP
4	1	FFP3645	BACK FILLER PLATE	AMP
5	2	FFP2160	SIDE FILLER PLATE	AMP
6	1	FFP4818F	FILLER PLATE	AMP
7	1	FFP4803F	FILLER PLATE	AMP
8	1	FFP3615F	FILLER PLATE	AMP
9			FILLER PLATE	AMP
10	1	FFP1260F	FILLER PLATE	AMP
11	1	FFP1239HF	FILLER PLATE	AMP
12	1	FFP3639H	FILLER PLATE	AMP
13	1	FTS124	ROOF WITH CROSS HATCH	AMP
14	3	GMB	CT MOUNTING BRACKET	NOHL
15	2	FSBSC	BUS SUPPORT CHANNEL	AMP
16	4	FBMA	A0 BUS BAR STAND-OFF	AMP
17	4	FBMB	B0 BUS BAR STAND-OFF	AMP
18	4	FBMC	C0 BUS BAR STAND-OFF	AMP
19	32	R-1000GR1	STAND-OFF INSULATOR	AMP
20	1	72A/2500-50	PADLOCKABLE HANDLE WITH 3-POINT LATCH	RICH PLASTIC AUSTIN

**SPECIFICATIONS**

- CABINET is free standing NEMA 3R. Frame is 12 gauge steel galvanized steel bolted together and include leveling provisions. All side plates are part formed galvanized steel and are bolted to the frame with tamper-resistant zinc plated bolts. Enclosure is primed and painted transformer green enamel.
- SUPPORTING STRUCTURE for bus bars is bolted to framework such as that any phase bar can be relocated vertically as required to meet job requirements.

- BUS BARS are electrical grade pitted aluminum # 6101T65 per ASTM specifications # B317 supported on 1/2 centers using double gastic insulators. Copper bus oxidizing on special order. Mounting for C0 bus bar is aluminum bus bar mounted with 18 sets of 9/16" square holes on 2" horizontally and 1 3/4" centers vertically.

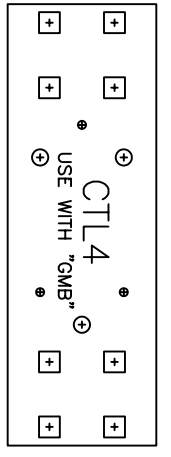
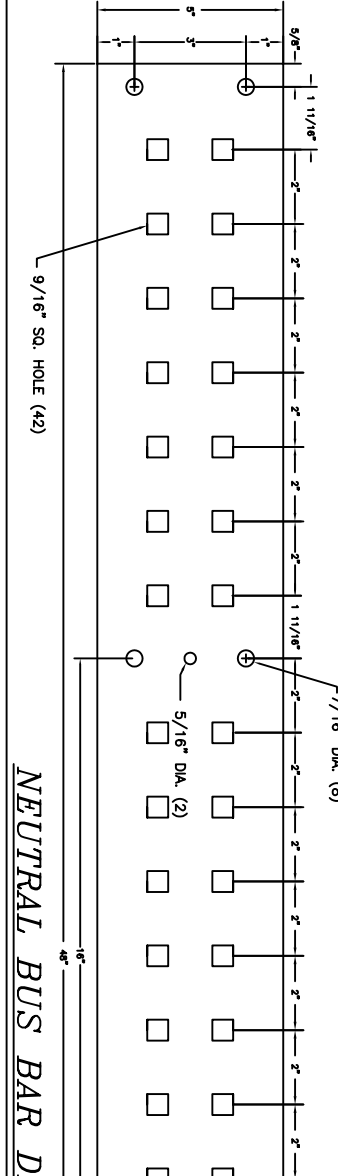
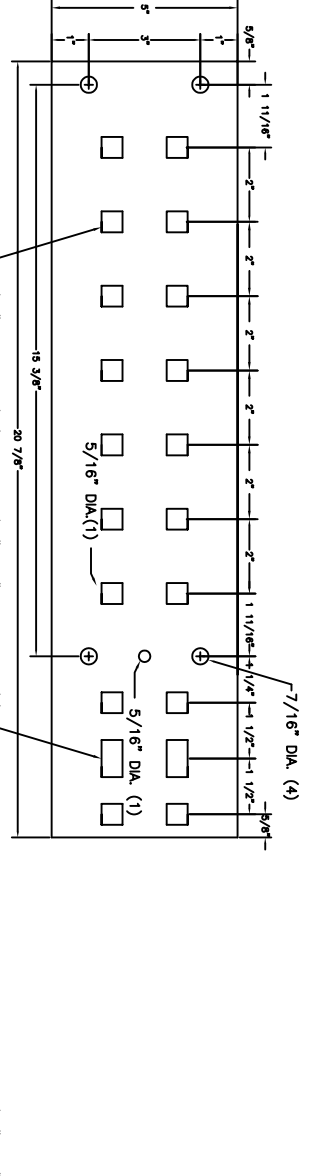
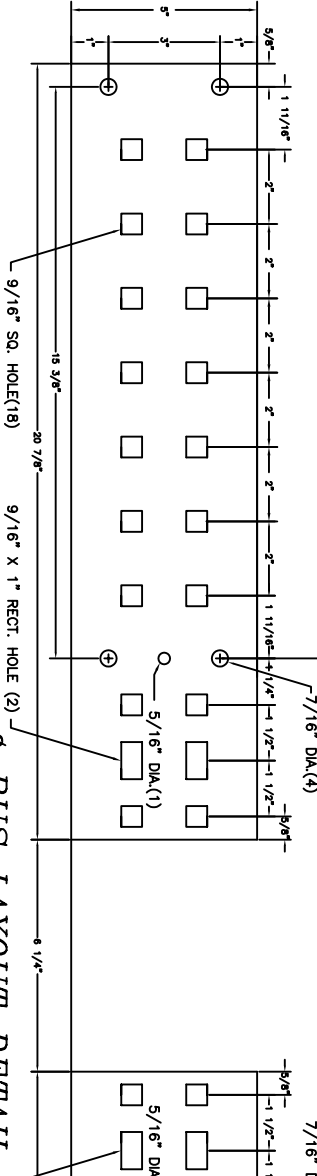
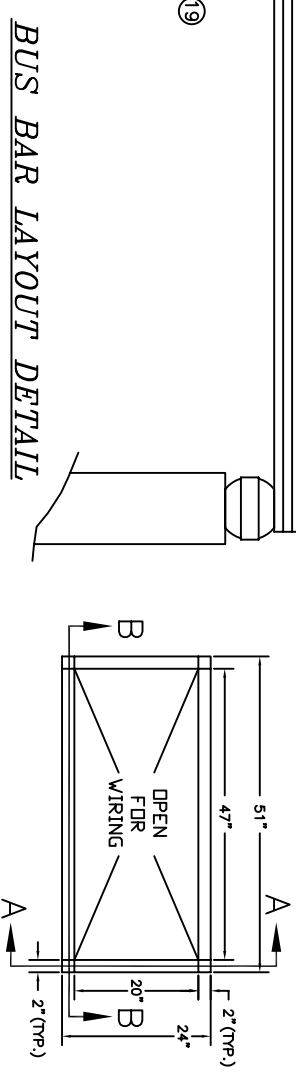
- RATINGS are 2000A, 2500A, 3000A, 3600A, and 4000A at 600V maximum 3φ-4W, 3φ-3W, 1φ-3W. All cabinets shall have bus brooded for 85,000A RMS amperes short circuit current rating.

- CONNECTORS in a range of #2 to 750 MCM are available in set screw type or compression type for field or factory installation. Connectors will be factory installed on right side of bus unless otherwise specified. Up to (12) - 750MCM or (24) - 250MCM conductors can be installed on each side, per bar.

- PT ENCLOSURE required for 480/277 volt installations. use part #PTB36 VT

**MERETS STANDARDS**

- ETL listed and labeled conforms to UL standard 1773 termination boxes
- Conforms to NEMA standards
- Meets National Electrical Code requirements
- Meets Power Company requirements



NOTE: EXTERNAL PT ENCLOSURE REQUIRED FOR 480V SERVICES PART # AMEPB369RN

ALUMINUM BUS	4" AL	5" AL	COOPER BUS	4" CU	5" CU	REQ. LINKS
AMP RATING	4" AL	5" AL	AMP RATING	4" CU	5" CU	AL. CU.
1600	3	3	1600	2	2	800
2000	3	3	2000	2	2	1000
2500	3	3	2500	3	3	1000
3000	4	4	3000	3	3	1000
4000	4	4	4000	4	4	1000

THIS DRAWING AND THE INFORMATION THEREON ARE THE PROPERTY OF AMERICAN MIDWEST POWER, AND ARE NOT TO BE COPIED, REPRODUCED OR DISCLOSED TO OTHERS WITHOUT THE EXPRESS WRITTEN CONSENT OF AMERICAN MIDWEST POWER.

REV. BY DATE  
 ECP 02/09/12  
 ECP 04/27/12  
 ECP 07/06/12

JOB NAME: MN POWER SERVICE CONNECTION CABINET  
 TITLE: SERVICE CONNECTION CABINET W/CT PROVISION 1200-4000  
 CUSTOMER: MN POWER

DRAWN BY: DATE: 06/22/10  
 CHECKED BY: DATE: 06/22/10  
 APPROVED BY: DATE: 06/22/10

SCALE: 1" = 12"

DRAWING NUMBER: MNP SCC16-40CT  
 SHEET: 1 OF 1

AMERICAN Midwest Power  
 3131 WORKSURG LANE MINNESOTA P.O. BOX 47036  
 PHONE (763) 551-1555 FAX (763) 551-9275