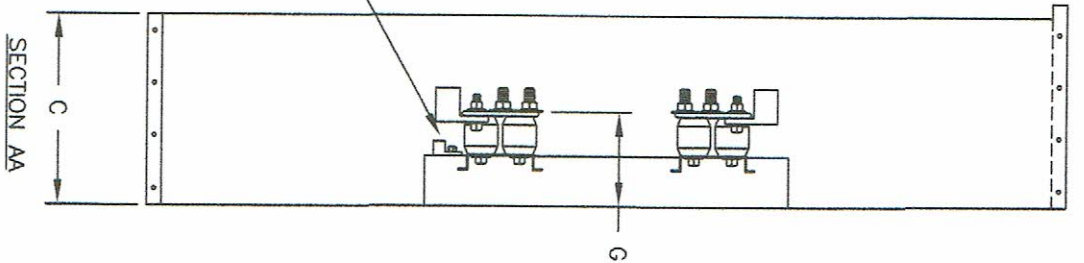
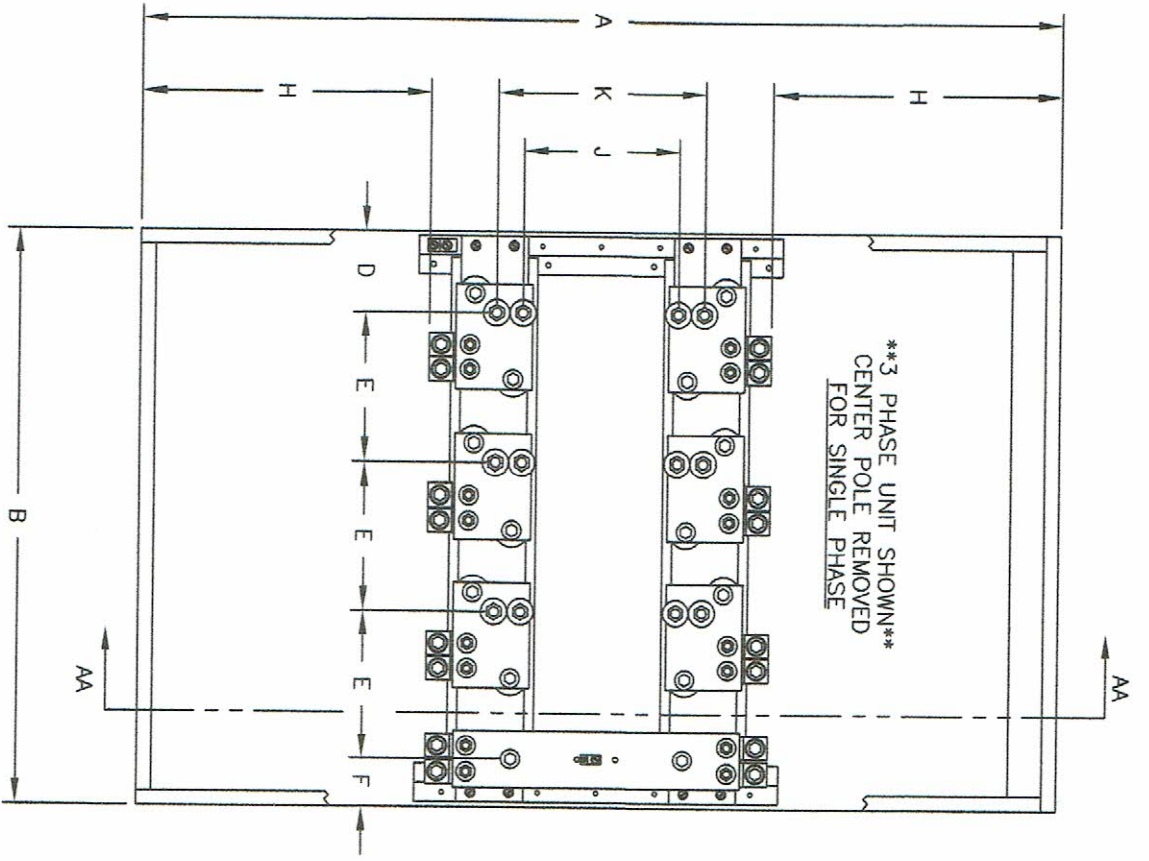


TITLE: CURRENT TRANSFORMER CABINET  
400-800 AMPS MINNESOTA INTERIOR  
DWC # CTCAN-MN-400-800  
1 OF 1  
DATE: 11/15/2001

DRAWN BY: SPW	ENGR BY:	JOB NAME:	CONSULTING ENGR:
MATERIAL:	JOB NUMBER:	JOB LOCATION:	REVISIONS
SCALE: NONE	CHECKED BY:	DISTRIBUTOR:	NO. DATE
CONTRACTOR:	CONTRACTOR:	DWG BY:	DATE
DO NOT SCALE DRAWING USE DIMENSIONS SHOWN ALL DIMENSIONS ARE IN INCHES UNLESS OTHERWISE NOTED			

\*\*MODEL NUMBER\*\*  
(3 PHASE) CTB3XXXX  
(1 PHASE) CTB1XXXX



\*\*LUGS FOR LINE AND LOAD ARE AS FOLLOWS\*\*  
400/600/800 AMP - 2-SET SCREW LUGS PER PHASE & NEUTRAL  
CONDUCTOR RANGE: (1) 750 MCM-1/0 OR (2) 300 MCM-1/0 PER LUG

MINIMUM DIMENSIONS

AMPERE CAPACITY	A	B	C	D	E	F	G	H	J	K
400-600	48	30	10	4-1/4	7-3/4	2-1/2	5	15	8-1/8	10-7/8
800	60	34	12	5-1/4	8-1/2	3-1/4	5	21	8-1/8	10-7/8

- NOTES:
- 1) ETL LISTED
  - 2) NEMA 1/3R COMBINATION
  - 3) GALVANIZED ENCLOSURE
  - 4) DOOR HINGED ON LEFT SIDE
  - 5) 1/4 TURN LATCHES (3) LOCKING HASP (1)
  - 6) 65KA BRACING STANDARD
  - 7) FOR OPTIONAL BRACING OF 85KA ADD SUFFIX H TO MODEL NUMBER



ELECTRO-MECHANICAL INDUSTRIES, INC.  
13300 6TH AVE NORTH  
PLYMOUTH, MN 55441

TITLE: CURRENT TRANSFORMER CABINET

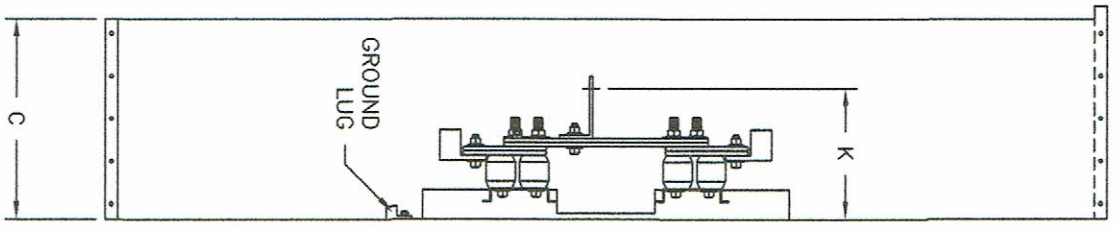
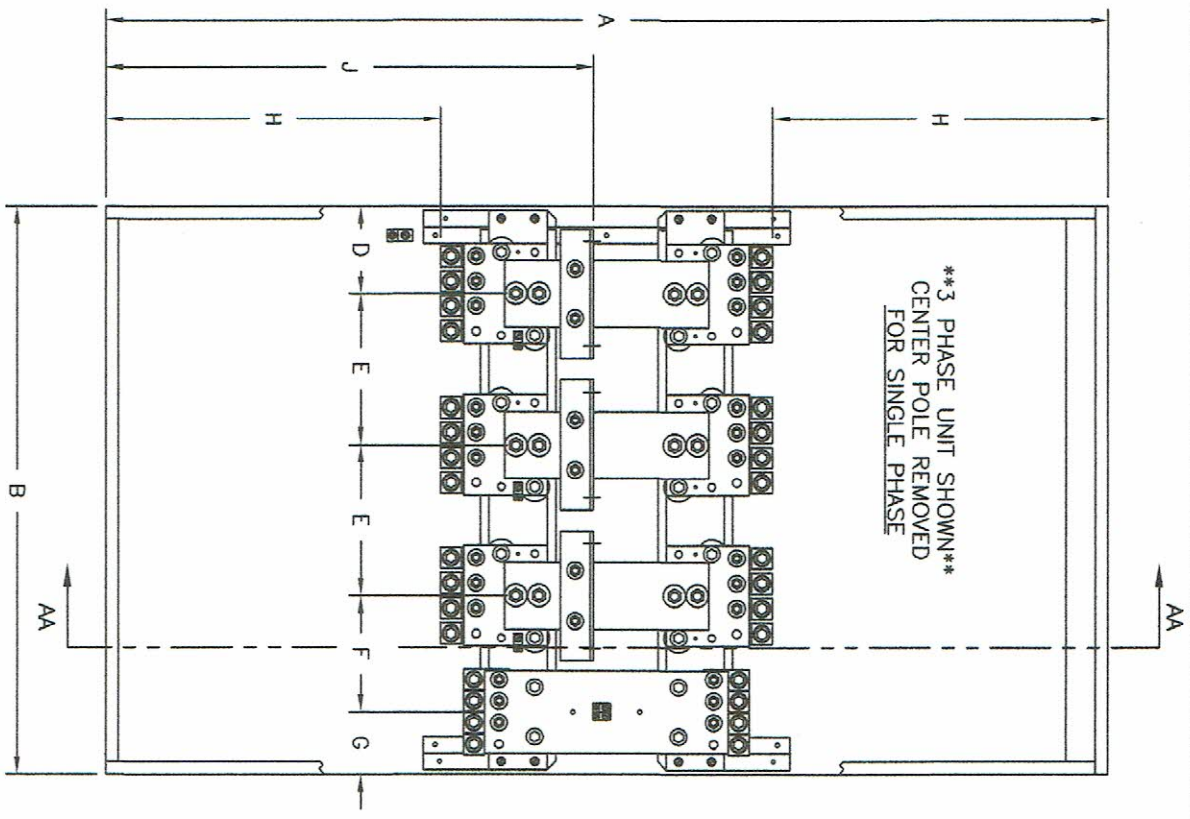
1000-1200 AMPS MINNESOTA INTERIOR

DWG # CTCAN-MN-1000-1200 1 OF 1 DATE 01/13/2004

DRWN BY: SPW	ENG BY:	JOB NAME:	CONSULTING ENGR:
MATERIAL:	JOB NUMBER:	LOCATION:	REVISIONS
SCALE: NONE	JOB LOCATION:	NO. 1	DATE 5/16/2014
CHECKED BY:	DISTRIBUTOR:	CONTRACTOR:	SS

DO NOT SCALE DRAWING  
USE DIMENSIONS SHOWN  
IN INCHES UNLESS  
OTHERWISE NOTED

\*\*MODEL NUMBER\*\*  
CTB312MX



1000-1200 AMP: 4-SET SCREW LUGS PER PHASE AND NEUTRAL  
CONDUCTOR RANGE: (1) 750 MCM-1/0 OR (2) 300 MCM-1/0 PER LUG

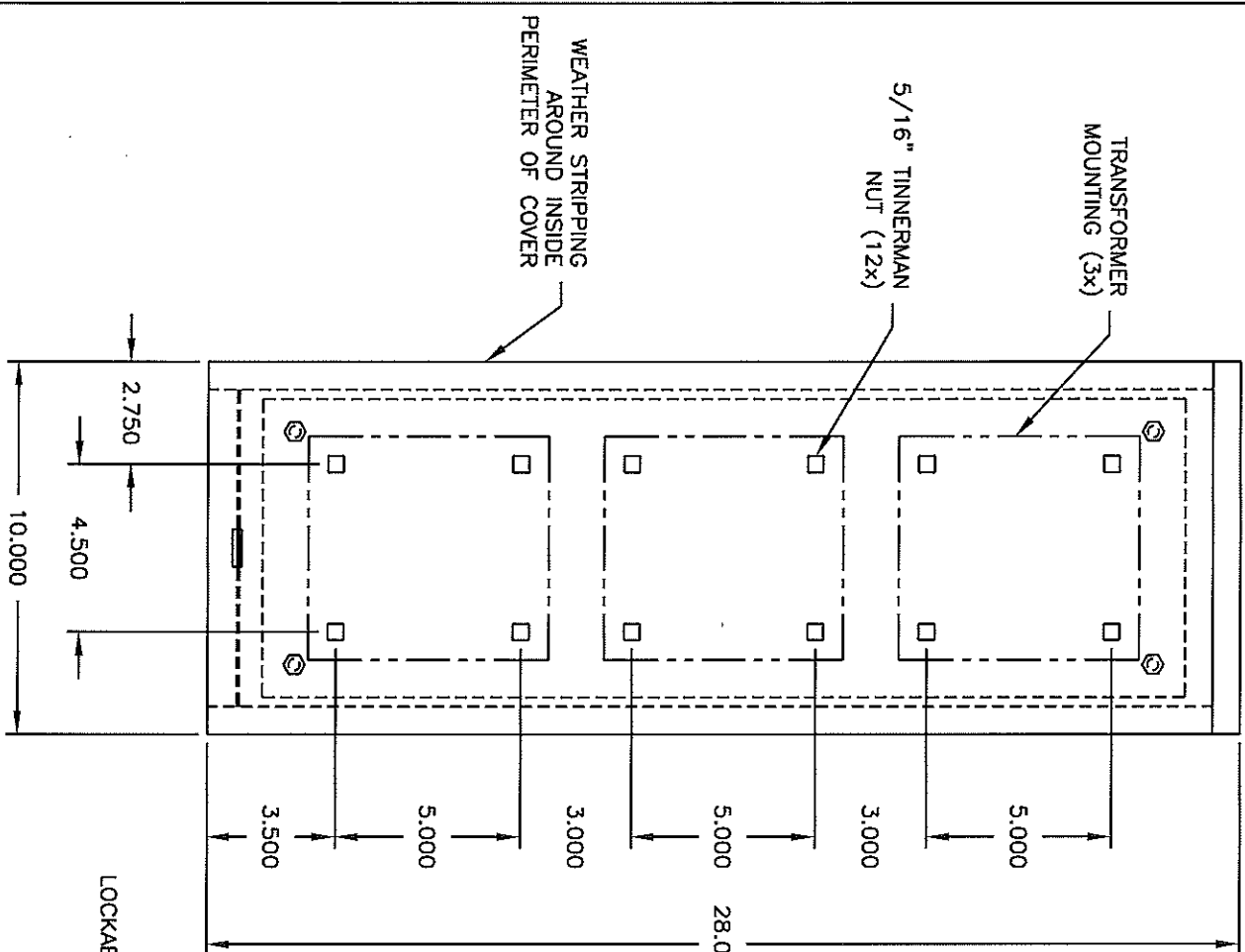
\*\*LUGS FOR LINE AND LOAD ARE AS FOLLOWS\*\*

AMPERE CAPACITY	MINIMUM DIMENSIONS										
	A	B	C	D	E	F	G	H	J	K	
1000-1200	60	34	12	5-1/4	9	7	3-3/4	20	29-1/4	7-3/4	

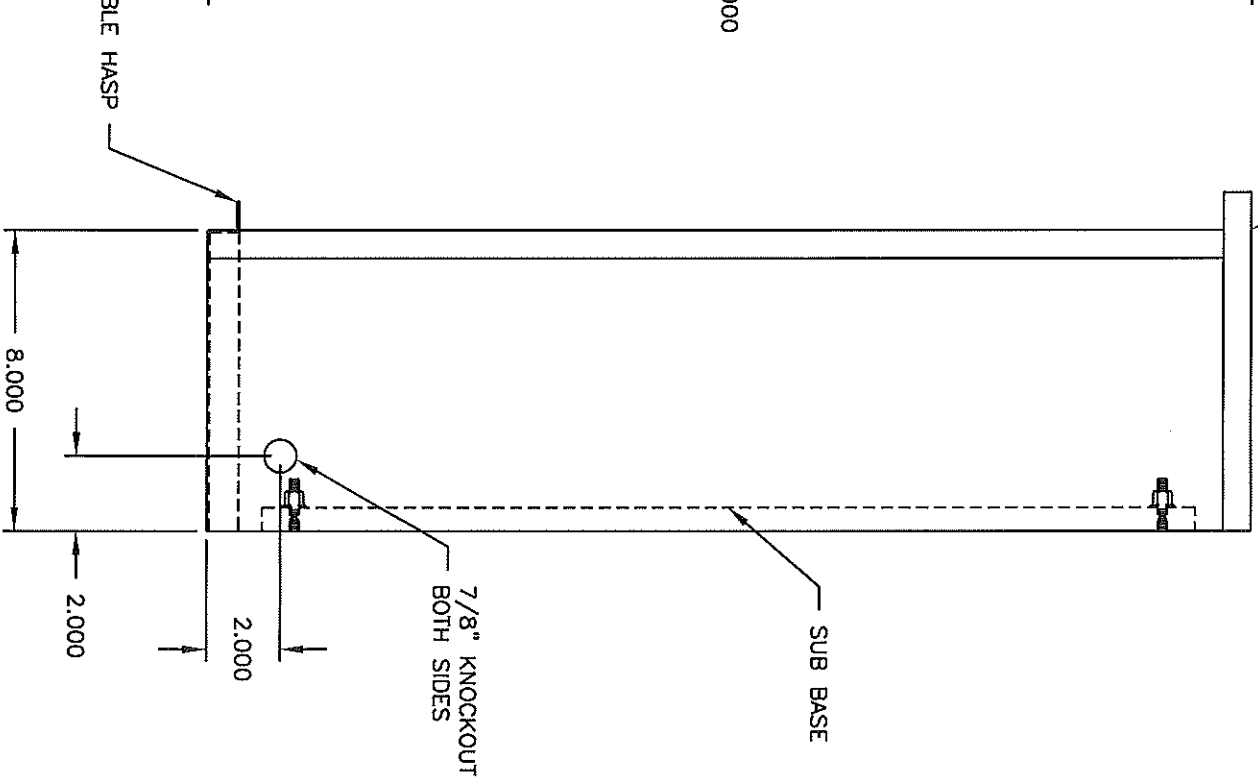
NOTES:

- 1) ETL LISTED
- 2) NEMA 1/3R COMBINATION
- 3) GALVANIZED ENCLOSURE
- 4) DOOR HINGED ON LEFT SIDE
- 5) 1/4 TURN LATCHES (3) LOCKING HASP (1)
- 6) 65KA BRACING STANDARD
- 7) FOR OPTIONAL BRACING OF 85KA ADD SUFFIX H TO MODEL NUMBER

SECTION AA




FRONT VIEW



RIGHT SIDE VIEW

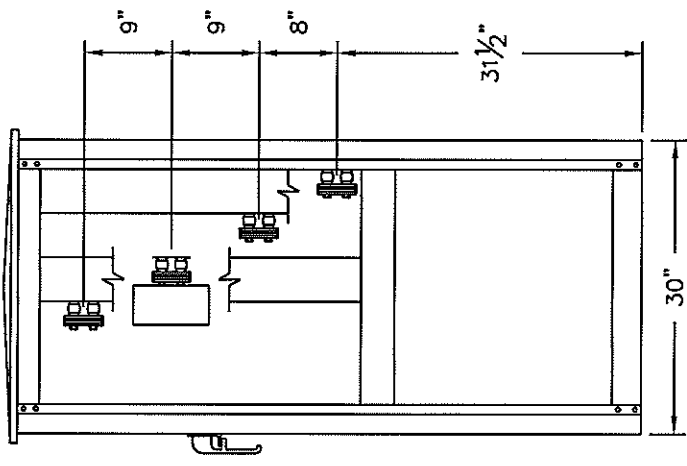
ALL COMPONENTS OF P.T. BOX CONSTRUCTED FROM 14GA. GALVANIZED STEEL

\*\*MODEL NUMBER\*\*  
PTB

 <b>ELECTRO-MECHANICAL INDUSTRIES, INC.</b> 13300 6TH AVE NORTH PLYMOUTH, MN 55441	DRAWN BY: SPW	JOB NAME:	CONSULTING ENGR:												
	MATERIAL: NOTED	JOB NUMBER:	DRAWING LOCATION: S:\Standard Sub.												
TITLE: <b>MINNESOTA POWER</b> <b>P.T. BOX LAYOUT</b>	SCALE: NTS	JOB LOCATION:	<table border="1"> <thead> <tr> <th colspan="3">REVISIONS</th> </tr> <tr> <th>NO.</th> <th>DATE</th> <th>DWG BY</th> </tr> </thead> <tbody> <tr> <td> </td> <td> </td> <td> </td> </tr> <tr> <td> </td> <td> </td> <td> </td> </tr> </tbody> </table>	REVISIONS			NO.	DATE	DWG BY						
	REVISIONS														
NO.	DATE	DWG BY													
CHECKED BY:	DISTRIBUTOR:	CONTRACTOR:	NOT SCALE DRAWING FOR DIMENSIONS FROM ALL DIMENSIONS FROM OTHERS UNLESS OTHERWISE NOTED												
DWG # PTBOX	1 OF 1	DATE: 5/21/2012													

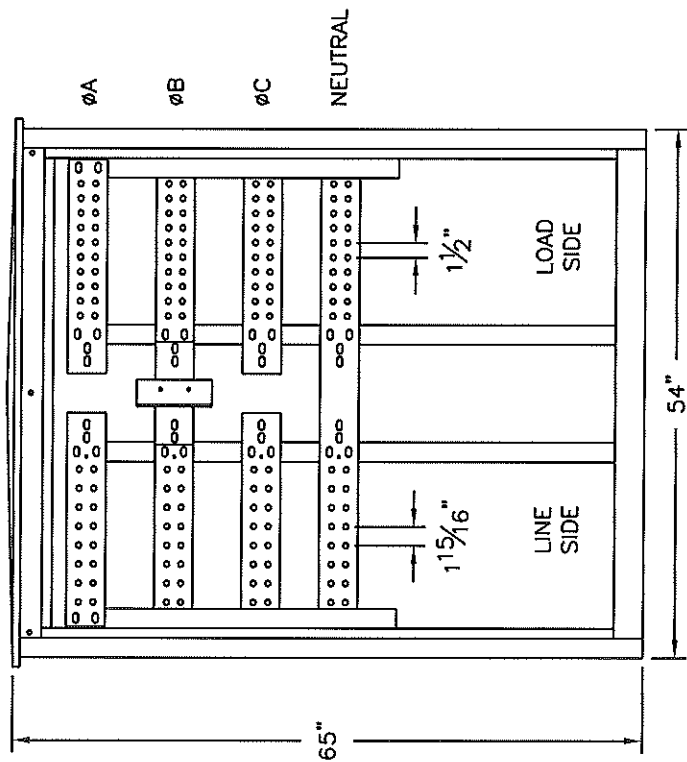
DRAWN BY: SPW	ENG BY:	JOB NAME: MINNESOTA POWER	CONSULTING ENGR:
MATERIAL:		JOB NUMBER:	DRAWING LOCATION: S:\Standard Submittals\
SCALE: NONE		JOB LOCATION:	REVISIONS
CHECKED BY:		DISTRIBUTOR:	NO. DATE DWG BY
			01 09/23/2004 SPW
DWG # CTC-WP	1 OF 1	DATE: 5/21/2012	DRAWN FOR: APPROVAL
			CONTRACTOR:

**SIDE VIEW**  
SIDE PLATE REMOVED  
CT NOT SHOWN

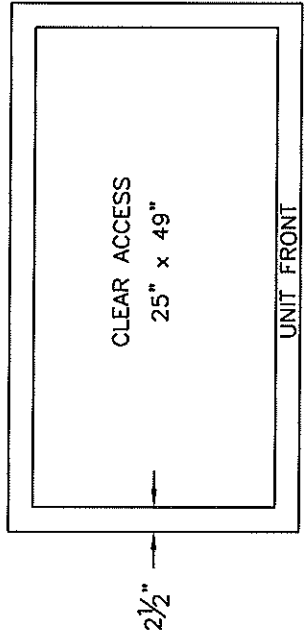


CAT #PTB (PT BOX) REQUIRED FOR 480V INSTALLATIONS

**FRONT VIEW**  
DOOR REMOVED



**TOP VIEW**



- 1) 800-4000 AMPS, 600 VOLT, 3 PHASE, 4 WIRE, 85kA SCCR (STANDARD)
- 2) NEMA 3R FREE STANDING UNIT OF CODE GA. GALV STEEL
- 3) STANDARD UNIT IS PAINTED UTILITY GREEN
- 4) ALUMINUM BUS RATED 750 AMP/SQ IN - GRADE 5 BUS HARDWARE  
COPPER BUS RATED 1000 AMP/SQ IN - GRADE 5 BUS HARDWARE
- 5) SET SCREW LOAD LUGS FURNISHED, REFER TO CHART FOR QUANTITIES
- 6) INSET DOORS WITH PADLOCKING 3 POINT LATCH & HOLD OPEN HARDWARE
- 7) BACK & SIDE PLATES MOUNTED WITH TAMPER RESISTANT FASTENERS
- 8) HEAVY DUTY GLASTIC INSULATORS
- 9) DONUT STYLE UTILITY C.T. PROVISIONS ABOVE 1200A, BAR-TYPE  
UTILITY C.T. PROVISIONS BELOW 1200A & CT JUMPERS NOT PROVIDED
- 10) TELESCOPING THROAT PER DRAWING 090-3106-00 - ORDER OPTION "T"

Part Number	Ampacity	Lugs
CTC-WP3800P	800A	2 - 750MCM-1/0 load lugs per PH & N
CTC-WP31000P	1000A	3 - 750MCM-1/0 load lugs per PH & N
CTC-WP31200P	1200A	4 - 750MCM-1/0 load lugs per PH & N
CTC-WP31600P	1600A	5 - 750MCM-1/0 load lugs per PH & N
CTC-WP32000P	2000A	6 - 750MCM-1/0 load lugs per PH & N
CTC-WP32500P	2500A	7 - 750MCM-1/0 load lugs per PH & N
CTC-WP33000P	3000A	8 - 750MCM-1/0 load lugs per PH & N
CTC-WP34000P	4000A	11 - 750MCM-1/0 load lugs per PH & N

DO NOT SCALE DRAWING  
USE DIMENSIONS SHOWN  
ALL DIMENSIONS ARE IN  
INCHES UNLESS NOTED  
OTHERWISE