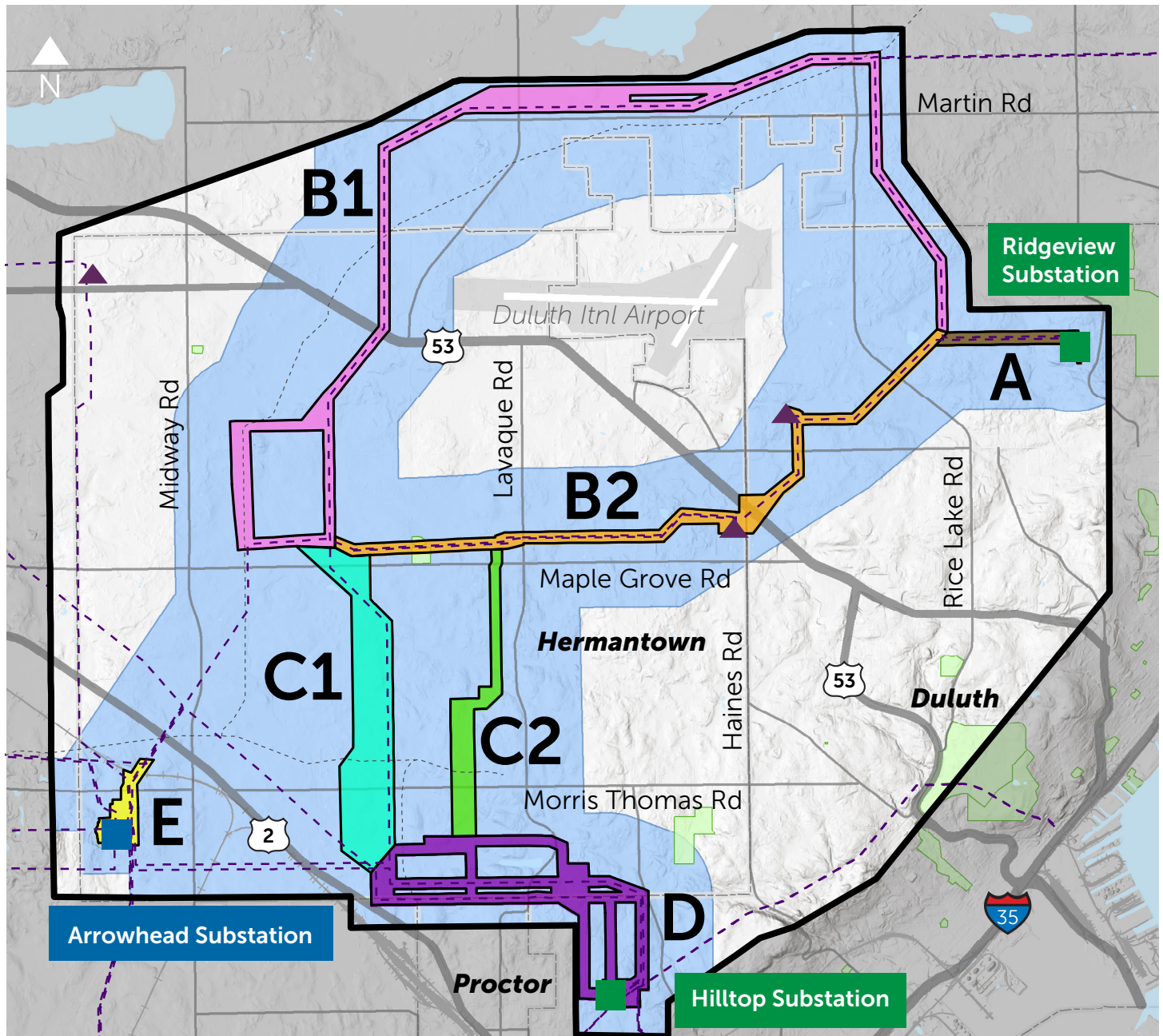
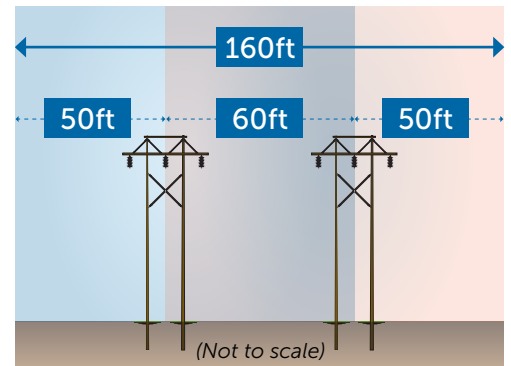


# Proposed Route Alternatives

Minnesota Power reviewed and incorporated comments during the development of the Proposed Route Alternatives. The Proposed Route Alternatives shown are wider than the necessary easement needed for the final construction and operation of the new line. Where feasible and in order to minimize impacts, Minnesota Power's preference is to parallel existing transmission lines. In the event that the new 115kV transmission line parallels an existing 115kV transmission line, the alignment of typical right-of-ways may look similar to what's shown in the diagram on the right.



- |                   |                             |            |            |
|-------------------|-----------------------------|------------|------------|
| Study Area        | Existing Transmission Lines | Segment A  | Segment C2 |
| Study Corridors   | Pipelines                   | Segment B1 | Segment D  |
| Project Endpoints | Substations                 | Segment B2 | Segment E  |
|                   |                             | Segment C1 |            |

This map provides Proposed Route Alternatives for the proposed project by Minnesota Power. These Proposed Route Alternatives were developed to collect information and feedback to identify a Preferred Route. This map does not represent the final route determination. The Minnesota Public Utilities Commission will make the final route determination after considering a variety of factors including human and environmental impacts and stakeholder and public input.